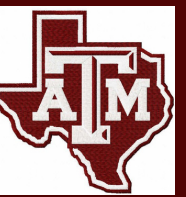


# GRADUATING F-1 STUDENTS



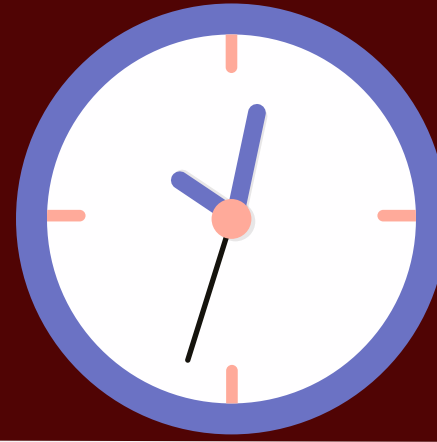
**REDUCED COURSE LOAD BASED ON FINAL TERM (RCL)**  
WILL YOU GRADUATE ON TIME?

**EXTENSION OF STAY**  
DO YOU NEED MORE TIME TO GRADUATE?

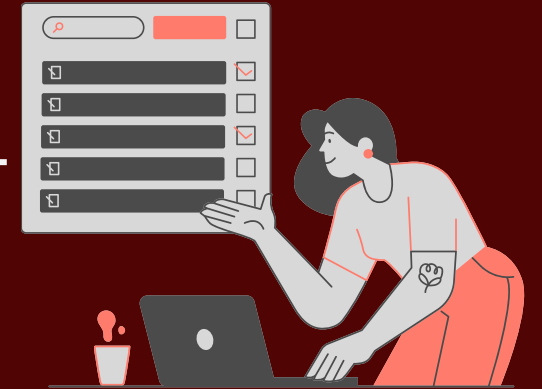
**CHANGE OF EDUCATION LEVEL**  
WILL YOU START A NEW PROGRAM AT A&M?

**SEVIS TRANSFER RELEASE**  
WILL YOU START A NEW PROGRAM  
AT A DIFFERENT SCHOOL?

WHAT SHOULD I DO NEXT?



Post-Graduation Information



**POST GRADUATION: 60-DAY GRACE PERIOD**

## Post Completion OPT

- OPT based on Graduation
- OPT based on Completion of Coursework (MS thesis and PhD only)
- Apply to ISSS for I-20, then apply to USCIS for EAD



## Post-Completion OPT EAD

- You may only work within the dates on your OPT EAD card

## STEM OPT Employment Reporting

- Must report at least every 6 months in ISSS Portal (even if you have the same job)
- If you do not report in a timely manner, you are not properly maintaining your F-1 status
- Keep address up to date in Howdy

## H-1B & F-1 CAP-GAP Extension

- Your employer must be willing to sponsor your H-1B application
- May be eligible for Cap-Gap if H-1B will start after OPT/STEM OPT ends.

## OPT Employment Reporting

- Report in SEVP Portal and/or ISSS Portal
- Failure to report could lead to accruing unnecessary unemployment days!
- Keep address up to date in Howdy

## STEM OPT EAD

- While your STEM OPT application is pending with USCIS, you are still allowed to work up to 180 days beyond the end date of your current EAD.



## STEM OPT Extension

- I-20 CIP code must be on the DHS Designated Degree Program List
- Apply to ISSS for I-20, then apply to USCIS for EAD



Start a New  
F-1 program

Complete  
F-1 Status  
&  
Change of  
Immigration  
Status

Depart the  
U.S.

